



Lifting Equipments.



**Steelage Industries**

**Jharsuguda**

# Lifting & Material Handling Equipments

DESIGN/ENGINEERING

MANUFACTURING

SUPPLY

We Provide

ERECTION & COMMISSIONING

WARRANTY

AFTER SALES SERVICES

## OUR PRODUCTS :

- ELECTRIC OPERATED OVERHEAD TRAVELLING CRANES  
(Confirms As per IS- 807, 3177 & 3938)
  - ✓ DOUBLE GIRDER (Capacity:- 2 to 50 Tons)
  - ✓ SINGLE GIRDER (Capacity:-0.25 to 20 Tons)
  - ✓ FIXED HOIST ( 1 to 50 Tons)
  - ✓ Under slung Cranes (0.25 to 10 Ton)
  - ✓ Wire Rope Hoists (0.25 to 20 Tons)
  - ✓ Jib Cranes (0.25 to 10 Tons)
- ELECTRIC WINCH:  
(Confirms as per IS-9507-1979)
  - ✓ Single Drum Type
  - ✓ Dual Drum Type Car Puller/Wagon Hauler  
(Capacity:-1 to 100 Ton)
- BUCKET ELEVATORS:  
(Confirms as per IS-7167-2002)
  - ✓ Vertical Type UPTO 60 TPH.  
Charge of buckets: - Scooping & Direct Fill  
Discharge of buckets:-Centrifugal & Gravity.
- GEAR BOXES:
  - ✓ Spur & Helical Type
  - ✓ Fabricated from M.S as per IS-2062
  - ✓ Capacity: - 0.5 KW to 200 KW.
  - ✓ Gears are as per IS-4460-2000

Design & Manufactured By:-

## Steelage Industries

Plot No-12 & 13, Industrial Estate-Jharsuguda

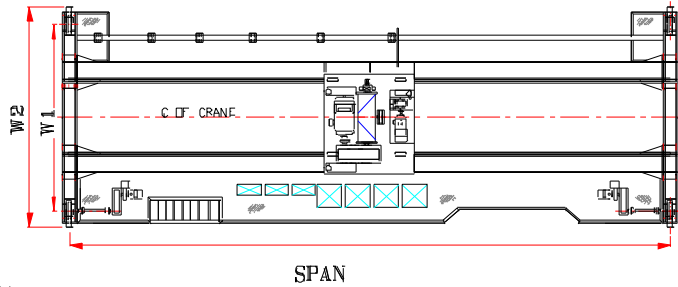
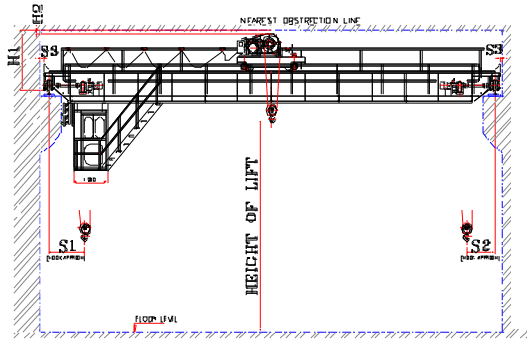
Dist:-Jharsuguda- Orissa -768203

Contact Person:- S.K.Mishra – Mobile-9238405605, Telefax:-06645271680, Tel:-9238101544,9238405618/601

E-mail:- Steelage\_07@yahoo.co.in,skm@steelage.in Website:-www.steelage.in &

www.steelageindustries.com

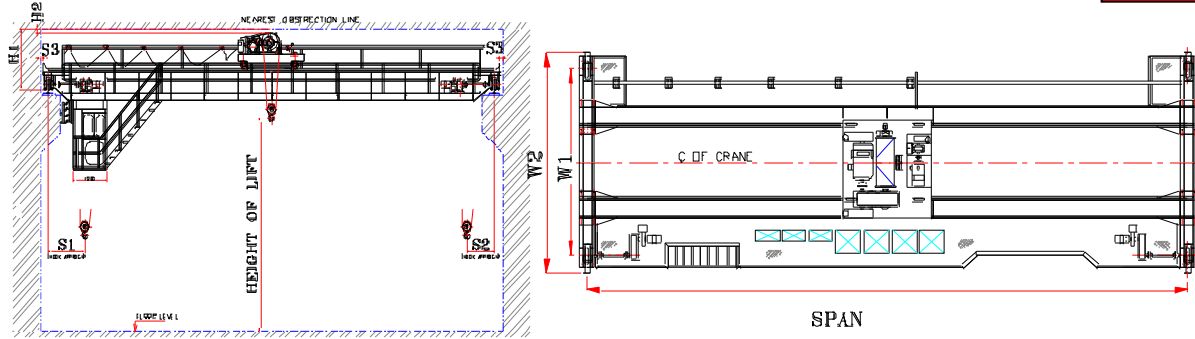
# DOUBLE GIRDER E.O.T CRANE



**DIMENSIONS OF DOUBLE GIRDER E.O.T. CRANES.**

SWL	Span	H1	H2	S1	S2	S3	W1	W2	Cr. Wt	W. Load
MT	M				mm					MT
2.0	08	1400	100	800	750	160	2800	3600	7.00	3.30
	10	1400	100	800	750	160	2800	3600	8.25	3.60
	12	1400	130	800	750	160	2800	3600	8.30	3.65
	14	1400	200	800	750	160	2800	3600	9.50	3.80
	16	1500	300	800	750	160	3200	4000	10.00	4.00
	18	1500	300	800	750	160	3600	4400	10.20	4.10
	20	1500	300	800	750	160	4000	4800	11.25	4.20
	22	1500	300	800	750	160	4400	5200	13.90	4.85
3.0	08	1400	100	800	750	160	2900	3700	7.10	3.80
	10	1400	100	800	750	160	2900	3700	8.30	4.10
	12	1450	200	800	750	160	2900	3700	8.35	4.15
	14	1450	230	800	750	160	2900	3700	9.50	4.40
	16	1500	300	800	750	160	3200	4000	10.00	4.50
	18	1500	300	800	750	160	3600	4400	10.50	4.80
	20	1500	300	800	750	160	4000	4800	13.60	5.30
	22	1500	330	800	750	160	4400	5200	15.00	5.60
5.0	08	1400	100	800	750	160	3000	3700	7.20	4.90
	10	1450	200	800	750	160	3000	3700	8.40	5.25
	12	1500	300	800	750	160	3000	3700	8.45	5.30
	14	1500	300	800	750	160	3000	3800	8.50	5.35
	16	1500	300	800	750	160	3200	4000	11.30	5.80
	18	1500	330	800	750	160	3600	4400	12.50	6.20
	20	1500	370	800	750	160	4000	4800	13.80	6.50
	22	1550	450	800	750	160	4400	5200	15.20	6.80
7.50	08	1600	100	850	810	165	3100	3900	8.25	6.60
	10	1650	230	850	810	165	3100	3900	8.25	6.60
	12	1650	230	850	810	165	3150	3950	9.50	7.00
	14	1650	230	850	810	165	3200	4000	11.90	7.50
	16	1700	300	850	810	165	3250	4050	13.80	7.90
	18	1700	330	850	810	165	3600	4400	14.90	8.20
	20	1800	350	850	810	165	4000	4800	16.30	8.50
	22	1800	350	850	810	165	4400	5200	17.70	8.80

# DOUBLE GIRDER E.O.T CRANE



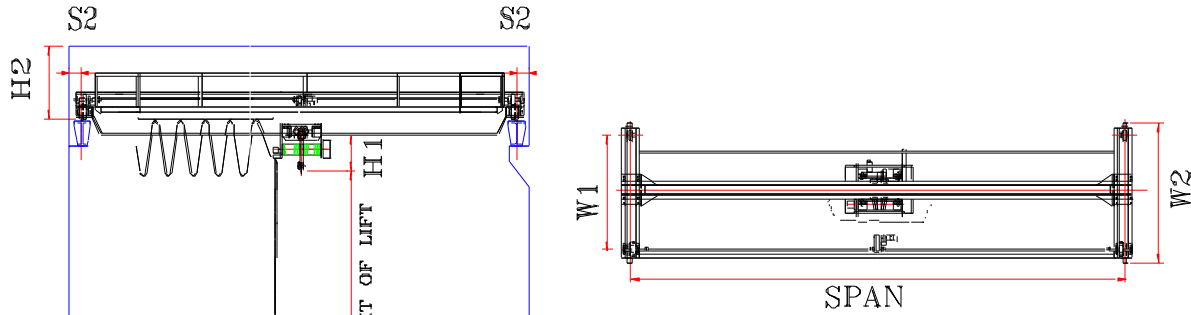
## DIMENSIONS OF DOUBLE GIRDER E.O.T. CRANES

SWL	Span	H1	H2	S1	S2	S3	W1	W2	Cr. Wt	W. Load
MT	M	mm							MT	
10.00	08	1600	110	1000	950	165	3200	4000	8.40	8.00
	10	1700	130	1000	950	165	3200	4000	8.40	8.00
	12	1750	150	1000	950	165	3350	4200	11.10	8.60
	14	1750	220	1000	950	165	3400	4200	12.30	8.90
	16	1800	300	1000	950	165	3400	4200	14.00	9.30
	18	1800	350	1000	950	165	3600	4400	15.20	9.60
	20	1800	350	1000	950	165	4000	4800	18.80	10.50
15.00	22	1800	400	1000	950	165	4000	5200	20.40	10.80
	08	1900	120	1250	1100	180	3600	4500	10.00	11.20
	10	1900	140	1250	1100	180	3700	4600	12.40	11.70
	12	1900	210	1250	1100	180	3800	4600	12.50	11.75
	14	1900	310	1250	1100	180	3800	4600	13.60	12.00
	16	1900	310	1250	1100	180	3800	4600	17.80	13.00
	18	1900	360	1250	1100	180	3800	4600	19.00	13.20
20.00	20	2000	420	1250	1100	220	4000	5100	22.10	13.90
	22	2000	370	1250	1100	220	4400	5500	26.00	14.90
	10	2100	200	1200	1050	220	4050	5150	14.30	15.00
	12	2100	220	1200	1050	220	4050	5150	15.50	15.30
	14	2100	220	1200	1050	220	4200	5350	18.00	15.90
	16	2100	270	1200	1050	220	4250	5350	19.70	16.20
	18	2100	420	1200	1050	220	4250	5350	22.10	16.80
25.00	20	2100	420	1200	1050	220	4250	5350	25.70	17.60
	22	2100	470	1200	1050	220	4250	5350	28.40	18.30
	10	2200	220	1250	1200	220	4400	5500	14.90	18.00
	12	2200	220	1250	1200	220	4600	5700	17.40	18.70
	14	2200	270	1250	1200	220	4600	5700	19.80	19.20
	16	2200	420	1250	1200	220	4400	5500	22.70	19.90
	18	2400	270	1250	1200	270	4500	5800	27.50	21.00
20	2400	320	1250	1200	270	4500	5800	28.70	21.30	
22	2400	420	1250	1200	270	4500	5800	31.40	22.00	

**Note:**

1. Due to continuous Technological improvements dimension are subject to change without notice.
2. **Above 25 T Capacity, details could be supplied on request.**
3. All Cranes conform to IS: 807, IS: 3177, Class II duty.
4. Details of Cranes as per Class III Class IV & STEEL MILL duties could be supplied on request.
5. Dimension H1 could be further reduced but would result in equivalent increase in dimension H2
6. Above dimensions are for EOT Crane having 6M height of lift. There may be minor changes in dimensions for higher lift.

# SINGLE GIRDER E.O.T CRANE



**DIMENSIONS OF SINGLE GIRDER E.O.T CRANES**

SWL	SPAN	H1	H2	S1	S2	W1	W2	Cr. Wt	W. Load
MT	M	mm						MT	
0.50	06	900	450	600	200	2000	2600	1.10	0.50
	08	900	450	600	200	2000	2600	1.78	0.67
	10	900	550	600	200	2000	2600	2.24	0.76
	12	900	550	600	200	2400	3000	2.60	0.83
	14	900	550	600	200	3800	3400	2.97	0.90
	16	900	650	600	200	3200	3800	3.47	1.13
2.00	06	1000	550	700	200	2000	2600	1.70	1.40
	08	1000	550	700	200	2000	2600	2.01	1.52
	10	1000	650	700	200	2000	2600	2.50	1.61
	12	1000	650	700	200	2400	3000	2.88	1.69
	14	1000	800	700	200	2800	3400	3.99	1.93
	16	1000	800	700	200	3200	3800	4.37	2.13
5.00	06	1150	800	800	200	2000	2600	2.90	2.85
	08	1150	800	800	200	2000	2600	3.14	3.42
	10	1150	800	800	200	2000	2600	3.59	3.52
	12	1150	850	800	200	2400	3000	4.04	3.61
	14	1150	850	800	200	2800	3400	5.10	3.83
	16	1150	900	800	200	3200	3800	5.56	4.05
10.0	06	1450	900	950	200	2600	3200	4.00	6.40
	08	1450	900	950	200	2600	3200	4.60	6.52
	10	1450	900	950	200	2600	3200	5.29	6.68
	12	1450	900	950	200	2600	3200	6.05	6.83
	14	1450	1100	950	200	2800	3400	7.53	7.17
	16	1450	1100	950	200	3200	3800	8.38	7.44
18	1450	1100	950	200	3600	4200	9.23	7.67	

SWL	SPAN	H1	H2	S1	S2	W1	W2	Cr. Wt	W. Load
MT	M	mm						MT	
1.00	06	900	550	600	200	2000	2600	1.40	0.85
	08	900	550	600	200	2000	2600	1.93	0.96
	10	900	550	600	200	2000	2600	2.24	1.01
	12	900	650	600	200	2400	3000	2.79	1.14
	14	900	650	600	200	2800	3400	3.20	1.21
	16	900	700	600	200	3200	3800	3.47	1.38
3.00	06	1150	650	800	200	2000	2600	2.40	1.95
	08	1150	650	800	200	2000	2600	2.65	2.26
	10	1150	650	800	200	2000	2600	3.00	2.34
	12	1150	700	800	200	2400	3000	4.03	2.56
	14	1150	800	800	200	2800	3400	4.54	2.67
	16	1150	800	800	200	3200	3800	4.92	2.88
7.50	06	1450	750	950	200	2600	3200	3.50	4.85
	08	1450	750	950	200	2600	3200	3.98	5.05
	10	1450	900	950	200	2600	3200	4.84	5.24
	12	1450	900	950	200	2600	3200	5.62	5.40
	14	1450	900	950	200	2800	3400	6.28	5.55
	16	1450	1000	950	200	3200	3800	7.43	5.91
12.5	06	1700	1000	1000	200	3000	3600	4.40	7.44
	08	1700	1000	1000	200	3000	3600	4.80	7.84
	10	1700	1000	1000	200	3000	3600	5.98	8.11
	12	1700	1200	1000	200	3000	3600	7.17	8.36
	14	1700	1500	1000	200	3000	3600	9.00	8.78
	16	1700	1500	1000	200	3200	3800	10.02	9.12
18	1700	1500	1000	200	3600	4200	11.44	9.45	

Note:

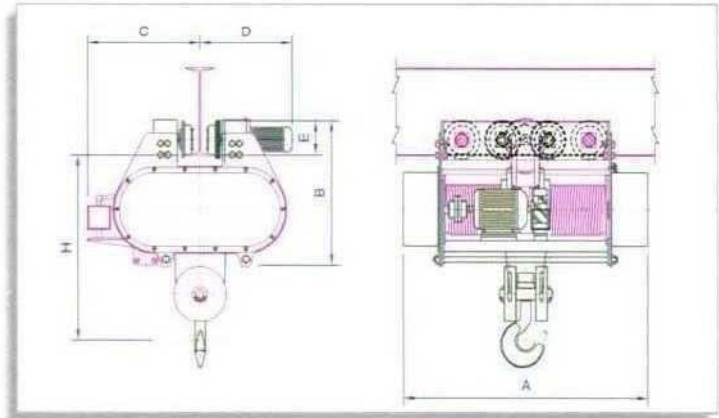
1. Due to continuous Technological improvements dimension are subject to change without notice.
2. Above 12.5 T Capacity, details could be supplied on request.
3. All Cranes conform to IS: 807, IS: 3938, IS-3177, Class II duty.
4. Details of Cranes as per Class III Class IV & STEEL MILL duties could be supplied on request.
5. Dimension H1 could be further reduced but would result in equivalent increase in dimension H2
6. Above dimensions are for EOT Crane having 6M height of lift. There may be minor changes in dimensions for higher lift.



# Steelage Wire Rope Hoists:



**WIRE ROPE HOIST**



## Technical Specification of wire Rope Hoist to IS : 3938

Model No.	Capacity in Kgs.	HT. of Lift in Mtrs.	Falls or Rope	Wire Rope Dia-MM	Speed M/Min		Motor H.P.		Flange Width of I-Beam	Dimension - MM						App. Wt. in Kgs.
					HT	CT	HT	CT		A	B	C	D	E	H	
SIWH-2	250	10.000	2	ø6	3.65	18	0.5	0.25	75 TO 125	700	425	290	350	170	450	130
SIWH-5	500	10.000	2	ø6	3.65	18	0.5	0.25	75 TO 125	700	425	290	350	170	450	145
SIWH-10	1000	08.500	2	ø8	3.65	15	1.5	0.25	75 TO 125	700	425	290	350	170	470	145
SIWH-20	2000	07.000	4	ø8	3.65	15	3.0	0.25	90 TO 140	1050	450	310	525	175	650	255
SIWH-30	3000	08.000	4	ø10	3.65	15	5.0	0.5	125 TO 210	1100	740	450	550	210	650	450
SIWH-50	5000	07.500	4	ø12	3.65	15	7.5	0.5	125 TO 210	1250	675	520	560	210	750	560
SIWH-75	7500	08.500	4	ø14	3.65	15	10.0	1.5	150 TO 210	1500	950	600	560	320	1000	950
SIWH-100	10000	07.500	4	ø16	3.00	15	10.0	1.5	150 TO 210	1700	930	650	650	320	1100	1150

## "Specific Design Advantages of Wire Rope Hoist:

- Design** : Steelage Hoists are desinged as per lates IS:3938.
- Modular Construction** : Steelage Hoists are very compact with elegant appearance. Hoist motor, brake, electrical control gears & trolley dirve Unit are easily accessible. Each unit can be separately assembled and can be easily dismantled. This simplifies repairs, maintenance cost and down time.
- Gear Boxes** : The gear train is precision hob cut from alloy steel material duly heat treated for optimum wear resistance. The gears are running on antifriction ball bearing in a totally enclosed oil bath gear box with splash lubrication of all gears & pinions for fast heat dissipation, smooth operation and long life.
- Rope Drum** : The rope drum is of sturdy construction made of M.S. seamless pipe and machined cut spiral grooves mounted on self-align ball bearings ensure smooth running.
- Rope Guide** : A rope guide completely encircling the drum is to hold the rope in its groove at all the times and can not uncoil even-when the rope is fully unloaded. Rope guide is provided for perfect winding for rope in drum groove.
- Motors** : Motors are toltally enclosed, fan cooled, squirrel cage crane duty confirming to IS : 325 with high starting torque.
- Brake** : A. C. Electromagnetic FAIL-TO-SAFE shoe/disc type brake for hoisting motion which ensures perfect safety in case of power failure. It is mounted externally on the rear end of the motor for ease of maintenance.
- Limit Switch** : Snap action type roller limit switches are provided to avoid over-hoisting and over-lowering actuated by rope guide.
- Control Panel** : A dust & vermin proof control panel incorporates heavy duty Contactors, control transformers, relays, HRC fuses with proper ferruling & spacious for ease of maintenance.